

# BEER MATTERS



ISSUE 473 - APR 2017

 @shfCAMRA  /sheffieldcamra

# BARROW HILL ROUNDHOUSE **RAIL ALE** 2017

THE MOST ATMOSPHERIC BEER FESTIVAL OF THE YEAR!

**THURSDAY 18<sup>th</sup> MAY** 12noon - 11pm\*

**FRIDAY 19<sup>th</sup> MAY** 12noon - 11pm\*

**SATURDAY 20<sup>th</sup> MAY** 12noon - 11pm\*

**OVER 300 REAL  
ALES, CIDERS,  
PERRYS, CRAFT  
& WORLD BEERS!**

**PLUS TRAIN RIDES  
& LIVE MUSIC**  
(on Friday & Saturday)

**Tickets**  
available now at  
[www.seetickets.com](http://www.seetickets.com)  
& AVAILABLE FROM  
LOCAL OUTLETS  
1<sup>ST</sup> MARCH 2017

**THURSDAY:**  
ADVANCE £5  
ON THE GATE £5

**FRIDAY &  
SATURDAY:**  
ADVANCE £7  
ON THE GATE £9



CAMPAIGN  
FOR  
REAL ALE  
Supported  
Festival

\* No under 18s allowed on site after 5pm.

\* Train rides run until 5pm on Friday & Saturday. No train rides on Thursday.



**BARROW HILL ROUNDHOUSE**  
CAMPBELL DRIVE, BARROW HILL,  
CHESTERFIELD, DERBYSHIRE S43 2PR

[www.railalefestival.com](http://www.railalefestival.com)



**BARROW HILL**  
ROUNDHOUSE RAILWAY CENTRE  
• STAVELEY • CHESTERFIELD •

BRITAIN'S ONLY SURVIVING OPERATIONAL  
ROUNDHOUSE ENGINE SHED

# BEER MATTERS

**3,500 MONTHLY  
CIRCULATION**

## EDITOR

Andrew Cullen

[beermatters@sheffieldcamra.org.uk](mailto:beermatters@sheffieldcamra.org.uk)

Articles, letters and suggestions  
are most welcome so please  
send them in\*

## ADVERTISING

Paul Crofts

[advertising@sheffieldcamra.org.uk](mailto:advertising@sheffieldcamra.org.uk)

**Quarter Page** £40+VAT

**Half Page** £60+VAT

**Full Page** £90+VAT

**Inside Cover** £100+VAT

**Back Cover** £110+VAT

Discounts for regular placements

PDFs or high-res (300 dpi) bitmaps  
only please

**Design** from £30

**Updates** from £10

**NEXT COPY DEADLINE**  
**Friday 7th April**

Opinions expressed are those of the author  
and may not represent those of CAMRA,  
the local branch or editor. Beer Matters is  
© CAMRA Ltd.

\*For legal reasons a full name and address  
must be provided with all contributions.

## THE FREE MAGAZINE OF CAMRA SHEFFIELD & DISTRICT

ISSUE 473 - APR 2017

### NEWS

4

Price of pints to rise after U-turn  
on tax



### BREWERIES

6

Abbeydale  
Exit 33  
Hopjacker  
Sheffield Brewery Co.  
Bradfield  
True North  
Brewery Liason Officers



### PUBS

10

Rutland Arms  
Carbrook Hall  
Itchy Pig  
Wagon & Horses  
ACV Update



### TRAVEL

13

Derbyshire minibus trip  
A grand London day out



### AWARDS

18

Pubs of the Month April 2017



### FESTIVALS

20

### DIARY

24

### COMMITTEE

26



## PRICE OF PINTS TO RISE AFTER U-TURN ON TAX

**Drinkers have been let down by the Chancellor's decision to increase beer and cider duty in the Budget - which will see the price of their pints rise.**

Colin Valentine, CAMRA's National Chairman says: "UK beer drinkers, pubs and brewers have been let down by the Chancellor's decision to increase beer duty for the first time in five years.

"The announced two penny a pint increase marks a return to the days when the much-hated Beer Duty Escalator contributed to 75,000 job losses, 3,700 pub closures and a 24% fall in beer sales in pubs.

The rise in beer duty will ultimately hit consumers in their pockets and lead to pub closures across the country.

"The government's U-turn on beer duty is a real missed opportunity to support consumers. The UK still pays one of the highest rates of duty across Europe, only consuming around 12% of the beer yet paying nearly 40% of all beer duty in the EU. Further beer duty increases will lead to unsustainable price increases in pubs. The decision completely ignores the pressures that are being faced by the beer and pub sectors."

**Unique role of pubs in England recognised by business rate relief.**

The Government has recognised the unique role that pubs play in our communities in England by introducing a new temporary £1,000 discount on business rates bills for all pubs with a rateable value of less than £100,000. CAMRA has warmly welcomed this relief and has called for it to be made permanent and increased further in future Budgets.

While this discount will provide welcome relief for the majority of pubs, not all will benefit as the relief does not apply to

the largest pubs so a minority are still faced with very large business rate increases.

Colin Valentine, CAMRA's National Chairman adds: "We are delighted that the Government has recognised the vital role that pubs play both in our local communities and our economy by introducing a new rate relief specifically for pubs in England.

"The announcement of a new rate relief for pubs in England is a ground-breaking step which recognises both the importance of pubs and the unfair impact of the business rate system on pubs. This new relief offers huge assistance to pubs and is a step towards CAMRA's ambition of securing a £5,000 rate relief reduction for all pubs.

"While this is welcome news for most pubs, some of the largest pubs will be excluded from the new relief. For example, the CAMRA award winning Baum pub in Rochdale will be unaffected by this discount. The Baum pub's rateable value is going up by 376.6%, and the pub will pay an additional £47,327 per year once transitional rate relief ends.

"CAMRA is calling on local councils to use the new discretionary fund announced today to support those pubs that will still be hit by massive business rate increases over the coming years.



# The Rising Sun

471 Fulwood Road, Sheffield, S10 3QA. Tel. 0114 2303855

## Community Pub

*Showcasing 13 cask ales plus craft  
keg beers and cider fantastic  
homemade pub food!*



**Now Fully Open!**

**Serving food seven days a week!**



*There's nothing more  
social than beer!*


ABBEYDALEBREWERY.CO.UK

UNTAPPO



TOM, BRIGITTE AND THE TEAM WELCOME YOU TO...

## THE HILLSBOROUGH HOTEL

54-58 LANGSETT ROAD, SHEFFIELD, S6 2UB - 0114 232 2100 -  

### 6 REAL ALES

LOCALLY AND NATIONALLY SOURCED

HOME-COOKED, LOCALLY SOURCED

## FOOD

## QUIZZES

**JIM'S GENERAL KNOWLEDGE  
(EVERY TUESDAY)**

**MUSIC (FIRST THURSDAY OF EVERY MONTH)**

## LIVE MUSIC

SATURDAY APRIL 15<sup>TH</sup>

### FOLK BREAKFAST

10:30AM

### AMERICANA

WITH JANE FOGGIN &  
IAN MCDONALD

3-5PM

### THE SLINGSHOTS

9PM

SUNDAY APRIL 15<sup>TH</sup>

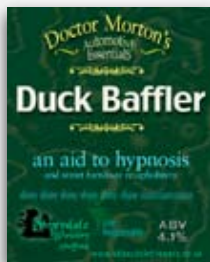
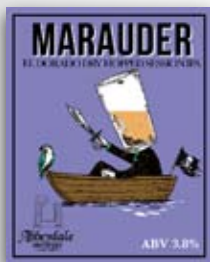
### FOLK BREAKFAST

10:30AM

### MIXED SESSIONS

WITH JIM MCDONALD &  
DAVE YOUNG

4-8PM



## ABBEYDALE

After a busy start to 2017 with the launch of not just our new look core range, but also our brand new Brewers Emporium series, we show absolutely no sign of slowing down!

BIG NEWS first... we are throwing open the doors of the brewery for the very first time, to hold a massive party on the premises on Saturday 6th May! This will be a ticket only event, intended to raise awareness for something even bigger. The brewery is 21 years old this year, you might say we're all grown up and moving out! We have completely run out of space in our current premises and are bursting at the seams and in need of a new home. Come along to see just what we've been up to and hear about our exciting plans for the future, all alongside drinking plenty of beer as course! We'll have some one-off casks and kegs of our own available alongside a cracking selection of guest beers from our

good friends around the country. It'll be a fantastic day with a real festival atmosphere – there'll be food trucks outside and live music curated by Now Then magazine, as well as the opportunity for brewery tours and exclusive tastings. We are planning that by the time you read this, our project will be live! Search for Abbeydale Brewery on crowdfunder.co.uk or look on our website for the link and grab your tickets before they sell out.

Phew! After that massive announcement I suppose we'd better get on with what beers we have available this month.

Our Beer Head series returns with **Marauder** (3.9%), swashbuckling it's way across the palate with Mount Hood and El Dorado hops, promising a delicate herbal aroma and flavours of grapefruit and apricot. We've also got the return of one of our most popular beers, **Dr Morton's Duck Baffler**,

a pale ale packed chock full of Citra hops for a light aroma with lemon and passionfruit, and a refreshing bitter finish.

Next up, we've been so excited to tell you all about our next collaboration, **Four Degrees of Separation** – a reunion back here at Abbeydale for three guys who were here in the early days of their career, and are now at Northern Monk, Magic Rock and Siren! This one's going to be a big, bold and oh so juicy IPA, weighing in at 7% and taking full advantage of our mammoth hop store with our favourite hops from around the globe.

Rounding off the month is our second iteration of sour beer **Unbeliever** – this time we're releasing a Gose at 3.9% brewed with coriander seeds and sea salt for a classic gose flavour.

Hope to see you all on May 6th!

## EXIT 33

**Stateside Pale** makes a return to the brewery's listing in time for spring. The 5% pale ale is loaded with Chinook, Simcoe and Mosaic hops and is dry hopped in fermentation with Amarillo.

A new Special called **Cookie Monster** has just been released dubbed a Chocolate Cookie Vanilla Porter. 'We made this with some ingredients you would find in a cookie including toasted wheat and oats with dark Munich malt to add a sweet balance. Chocolate malt is boosted by the addition of buckets full of organic cocoa nibs which we toasted ourselves in the ovens at the Harlequin pub. Fresh Madagascan vanilla pods are added to the cask to give a real depth of flavour.

Exit 33 are taking over bottling beer for Noodle Inn, Noodle Inn Centro and Satay Yo! Sushi restaurants. Until recently this was done by North Union Brewing. The bottled beer called **Gan Bei** meaning 'Bottoms up' is a 5% pale beer hopped with Cascade.



## HOPJACKER

The recent Sheffield Beer Week, which ran alongside the SIBA BeerX, BeerAlive festival and BeerNow conference, saw lots of folk in town from all over the world that appreciate good beer visiting pubs, bars and breweries all over the city that had laid on special events.

Two of the events featured Hopjacker beers: the Old House, which held a battle of the beers style tap takeover with True North (who own the bar) and Hopjacker sharing the bar, and the White Lion which held a mini beer festival with some Hopjacker beers on the list and a meet the brewer session with Edd.

Proving a big hit during beer week was **Hopjacked Citra**, which as the name suggests is packed full of juicy Citra hops!

Another hoppy beer brewed recently is **Kali IPA**, a 6.4%, 90IBU monster of an IPA that apparently promises to put hairs on the hairs on your chest. Principle hops used in this brew are Chinook and Galaxy. This beer, as well as being on cask and keg, is also going to be the first

one that Hopjacker has bottled.

In a complete contrast, Hopjacker has brewed a mild, in collaboration with the Two Beer Geeks Blog and White Lion pub. Naturally it isn't just any old mild, it is a chocolate cherry mild called **Cherried Alive** offering tart cherry flavours, rich chocolate notes and a residual sweetness from the complex malt bill.

As previous years the pub that is home to Hopjacker Brewery - the Dronfield Arms - is taking part in the 3 Valleys festival on Saturday 3rd June, as usual you can expect a great selection of beers, food and music to enjoy with most of the festivities taking place outside on the decking and in the closed off car park, the pub is just a few minutes walk from Dronfield Station or the 44 bus stops almost next to the pub - plus of course there will be free festival buses running. Look out for the 3 Valleys promotional beer mats out and about, produced in conjunction with Hopjacker Brewery (who feature on the other side of the mat).



## SHEFFIELD BREWERY CO.

Spring has sprung, Sheffield is in bloom, and - most importantly - the World Snooker Championships are upon us. To celebrate and promote the internationally renowned event, we are launching **Crucible Best** with a brand new pump clip and set of beer mats. Be sure to sit down with a pint of our **Best Bitter** at the Museum, the Graduate and many other city centre pubs that stock our beers around the Crucible Theatre.

Available this April is our latest special, **Khaki Blanco**. This 4.3% New Zealand Pale Ale carries through all the hallmarks of New World hops - passionfruit, pine, lemon zest and gooseberries - delivered by hefty amounts of Rakau, Moetueka and Nelson Sauvin.

Be on the look out for our new range of bottle conditioned, limited edition beers. We've been busy bottling our range of Finely Polished Beers

over the last month and will be releasing **Razor Paste** (5.6% IPA), **Brightshine** (4.0% Crisp Golden Pale), **Knife Powder** (4.7% American IPA) and **Khaki Blanco** (4.3% New Zealand Pale) in 330ml bottles very soon, available from the brewery and local stockists.

We're also pleased to announce that the brewery is now officially an off-license, meaning you can purchase beer direct from our doors. If you're having a party, a wedding, an event, or just looking to purchase some beer for yourself, we sell a range of beers in different volumes including bottles, pins (40 pints) or even a full ferkin (80 pints). Call us on 0114 272 7256 to place an order or email [sales@sheffieldbrewery.com](mailto:sales@sheffieldbrewery.com)

Visit our new looking website for all the latest news and further details on our beers and fantastic brewery venue [sheffieldbrewery.com](http://sheffieldbrewery.com)



## BRADFIELD

North Sheffield's Bradfield Brewery has unveiled a special beer in celebration of the Tour de Yorkshire cycle race which will finish at Fox Valley on April 30th.

The team at the brewery have come up with the 4% ABV bike themed tipple called **Farmers Push Iron** in the build up to the big event which will see the eyes of the cycling world focussed on north Sheffield and on the area's notorious hill climbs.

The family run brewery is based on a working farm in Bradfield, just a few minutes from the route of the Tour de Yorkshire's final day which will test the cyclists with four tough hill climbs including the Cote

de Wigtwizzle and Cote de Ewden Heights.

The race will finish at the Fox Valley shopping centre on April 30th after the 194 km ride from Bradford. It's already been billed as one of the toughest stages on the professional circuit this year.

Thousands of amateur cyclists will also take part in in the Maserati Tour de Yorkshire Ride which will start and finish at Fox Valley on the final day of the three-day race.

John Gill from Bradfield Brewery said: "The Tour de Yorkshire coming to our corner of the county really is something special to celebrate and we'll definitely be raising a glass of *Farmers*

*Push Iron* to the cyclists as they take on our beautiful part of South Yorkshire and tackle some of Sheffield's notorious seven hills.

"It was fantastic to have the Tour de France Grande Départ here in 2014 so to have this level of cycling event back in the area is fantastic for the region."

The team at Fox Valley are working with community groups, the parish council and other local stakeholders to make the event a real celebration for everyone in the area.

Annabel Plumtree, centre manager at Fox Valley, said: "Bradfield's special *Farmers Push Iron* is a great way to celebrate Yorkshire's biggest bike race.

"There are lots of fantastic events and artwork planned along the route and everyone is really getting excited now for the big event on April 30th."

*Push Iron* will be available at pubs along the route of the Tour de Yorkshire as well as in bottles and mini kegs at the Brewery shop in Bradfield.

Picture shows the team at Bradfield Brewery with centre manager at Fox Valley, Annabel Plumtree.



## TRUE NORTH

True North brewed a special beer for Sheffield Beer Week, an **Earl Grey** IPA containing tea and Chinook hops. They also held one of their brewery tap sessions at the weekend with the doors open for visitors to come and see the brewery and enjoy a beer at their pop up bar.

## FANCY VOLUNTEERING AS A BREWERY LIAISON OFFICER?

It is CAMRA's aim to appoint a volunteer into a Brewery Liaison Officer (BLO) for every brewery producing real ale in Britain. The role is one of maintaining a good relationship and dialogue between CAMRA and the brewery, keeping our Brew-

ery Information System up to date with beers regularly brewed and other information and to file a brewery news report to the regional co-ordinator on a quarterly basis.

The BLO also ensures that the correct infor-

mation about a brewery appears in the national Good Beer Guide and feeds in suggestions for the beer list at the Great British Beer Festival.

Here in Sheffield and District we now have a large number of brew-

eries and not enough volunteers to provide an effective BLO network and are looking for some more volunteers. If you fancy it drop an email to [secretary@sheffield-camra.org.uk](mailto:secretary@sheffield-camra.org.uk) to find out which breweries have vacancies.



**FREE  
ENTRY**  
ALL WEEKEND  
NON-STUDENTS WELCOME



**OVER 100**  
VARIETIES  
OF REAL ALE,  
FRUIT BEERS  
AND CIDER

**PLUS**  
CRAFT  
BEER  
BAR AND  
POP UP  
GIN BAR

**FRIDAY**  
28TH APRIL  
TO  
**SUNDAY**  
30TH APRIL  
2PM - 12AM\*

**LIVE MUSIC AND GREAT FOOD ALL WEEKEND!**



\* WHILE STOCKS LAST

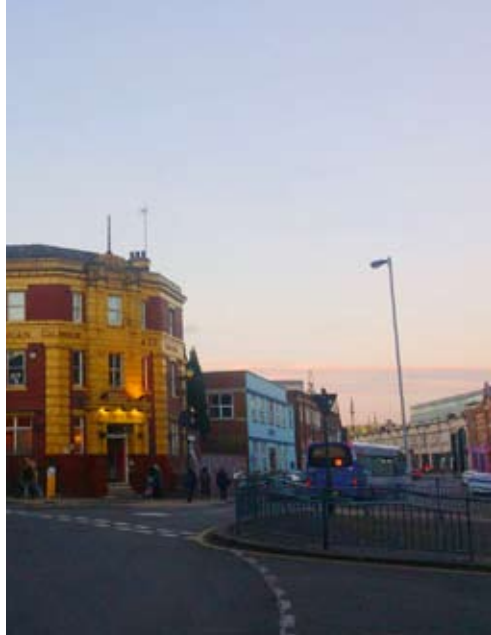
ESSENTIAL INFORMATION



Sheffield  
Nightline  
We'll listen, not lecture



for the facts about alcohol  
[drinkaware.co.uk](http://drinkaware.co.uk)



## RUTLAND ARMS

The Rutland Arms pub business is now under new ownership! The lease has moved from Reet Ale Pubs to a company owned by Chris Bamford and Kate Major, who previously managed Shakespeare's and the Three Tuns respectively.

All the same staff are working at the pub, both on the bar and in the kitchen - including managers Pete & Heather - so major changes aren't expected,

more a gradual building on the established foundation of good beer, food and atmosphere already found at the Rutty.

Chris and Kate plan to continue to offer Blue Bee as their regular beers but we can expect to see a more varied guest beer selection on both cask and keykeg. For Sheffield Beer Week a tap takeover was held with Norweigen Brewery Lervig.



## CARBROOK HALL

Earlier this year Punch taverns sold the Carbrook Hall and it closed on the Monday 20 February. It did not close because it wasn't making money. It closed because it wasn't making enough for Punch Taverns.

The Carbrook Hall was a thriving pub. Not all the time, not everyday, and it wasn't to all tastes - what pub ever is? It struggled to make itself heard and visited: trapped by the ring road and hemmed in by modern industrial units and remnants of our Victorian steelmaking past.

But it was viable as a business and it catered for any number of pub goers as the application for Asset of Community Value application that I made jointly with Sheffield CAMRA makes clear.

I collected the evidence for this so I know that the Carbrook Hall made a vir-

tue out of it's location, and it's community was friendship groups from all over the city who kept coming back, local workers and people interested in local history or status as 'most haunted pub'.

On weekdays it offered lunches for Santander Bank telephone call and internet banking support workers next door and staff in nearby businesses and workers from local light industry. Users of Hollywood Bowl bowling alley, and from the internationally famous steel wire rope manufacturer Gripple came in, from Forgemasters and from businesses based at Meadowhall Shopping Centre. It was used by shoppers and staff after work or on lunch breaks from Meadowhall retail park, from Aldi, Currys, PC World, The Range, B and M Bargains and Iceland warehouse.

Staff from the MacDonal-  
d's restaurant over the  
road held meetings here.  
Visitors on courses, attend-  
ing conferences and on  
holiday in Sheffield stay-  
ing at the Premier Inn by  
Sheffield Arena often came  
down and praised it as a  
'proper pub'.

The Steel City Riders  
motorcycle group met at  
the pub and recently raised  
funds through a charity bike  
ride to support Kasabian  
Newton Smith, aged eight,  
a little Sheffield boy who  
lost his fight against cancer  
in December 2016.

Two Sheffield based ice  
hockey teams made it their  
base and staff from Forces  
Support Limited, a military  
bereavement charity based  
on Carbrook Hall Road  
close by used the pub on  
a regular basis.

Everyone spoke warmly  
of how inclusive it was: "a  
caring place. It looks after  
its customers, the kind of  
place where people talk to  
each other". Michelle and  
family worked hard in the  
last 18 months to keep the  
place going in the face of

pub company indifference  
and lack of investment.

The future? To our  
knowledge the new own-  
ers, West Street Leisure  
have no experience of  
community pubs or listed  
buildings, have said "all  
options open" which tells  
us nothing except they ei-  
ther don't know what they  
want to do or want to keep  
their plans secret.

Neither are accept-  
able for the Carbrook. But  
thanks to the ACV sub-  
mitted a few days before  
it closed I may not be talk-  
ing about it as though it  
was the past tense. There  
is a glimmer here. The Car-  
brook Hall may live again,  
hopefully in the hands of  
a brewer - a local brewer?  
and a community interest  
group who care for its his-  
tory and the communities  
that use it. Lobby the politi-  
cians: the local councillors  
and MPs, gather evidence  
on use and keep an eye  
on your local - it could be  
next.

**Brian Holmshaw**  
Sheaf Valley Heritage



## ITCHY PIG BIRTH OF A STY-LISH BEER

There's no ham-fisted at-  
tempts at pig jokes here!

Local brewery Exit 33  
Brewing has joined forces  
with Broomhill micropub  
The Itchy Pig to create their  
very own beer, a beer with  
a twist in the tale.

Pete Roberts of Exit 33  
said "The Itchy Pig owner  
Ted is from Kent and com-  
pletely swapped career to  
open his own take on the  
micropub, just like I did  
when I opened the brew-  
ery - so, it seemed a good  
fit to collaborate on a beer  
together.

Ted and Vanders trotted  
along to the brewery and  
spent the day creating a

pale ale dubbed **Sty PA**.

The pub guys were itch-  
ing to brew a hoppy IPA  
style beer so after an early  
mash in we sat down for a  
quick 'Pignic' before add-  
ing large hop additions to  
the kettle. No porkies, this  
is a great beer! All in all, it  
was a great day and nobody  
felt boar-ed or was left dis-  
grunt-led by the experience.  
Ok I'll stop now."

Sty PA is 4.5% and avail-  
able at the Itchy Pig Glos-  
sop Road.

A beer launch party is  
planned for Good Friday.

**Pete Roberts**  
Exit 33 Brewing

## HARLEQUIN

The programme of live music at the Harlequin on Nursery  
Street continues through April including:

**Harmony of Spheres**  
Sat 1 Apr

**Gav Coulson**  
Sun 2 Apr

**Rooster**  
Mon 3 Apr

**Earth Tales**  
Sat 22 Apr

**Swear Box**  
Fri 28 Apr

**AK47**  
Sat 29 Apr



## WAGON & HORSES

The Wagon & Horses by Millhouses park has now reopened under ownership of True North Brewery.

The pub has had a refurbishment but no substantial change as its already a great building! It's now split into a separate dining end and drinkers end in a similar fashion to other True North venues.

The kitchen is now much more fresh food focused than it's previous incarnation as part of Greene King's Flame Grill chain.

The pub opens at 8:30am serving breakfasts and a brunch and sandwich menu is served until 4pm. Pizzas and burgers also available from midday. Come 5pm the evening meals menu kicks in, as well as pizzas and burgers there are dishes featuring more classic cooking such as Shepard's Pie, Chipotle Pork & King Prawn Skewers, Sea Bass, Steak, Griddled Calf's Liver and more.

The bar opens at 10am with a range of real ales from True North and an extensive gin selection!

Buses 82, 97, 98 and 218 get you there or the Millhouse Park car park is close by.



## ACV UPDATE

Before Christmas, a letter was sent to Sheffield City Council (SCC) from Paul Ainsworth, the Chair of the National CAMRA Pub Campaigns Group expressing disquiet regarding their procedures and practices. A subsequent meeting between Ccl.Jack Scott, Paul, the Chair of Sheffield CAMRA and myself occurred. Ccl.Scott commenced the meeting by announcing that the University Arms has achieved ACV status. We are obviously very pleased by this statement and hope that it is an indication of changes in the way that Sheffield is responding to ACV applications.

Our repeated comments that Sheffield City Council seem to be gold-plating the ACV process now has backing from the House of Lords. On 28th.February, there was a Lords debate on extending full planning protection to all pubs in England. The vote was won 278-188. The size of the majority is significant and will encourage the Government to consider their position. The next

step is for the Commons to vote on the amendment (end of March?). The size of the win gives CAMRA a real opportunity to secure the change that we have campaigned for over many years.

During the debate, Lord Scriven commented:

*"In Committee, the Minister generously asked for examples of where the asset of community value scheme was not working well in particular authorities. He will be aware that I contacted CAMRA in Sheffield to ask whether there were any incidents of such difficulties with the scheme in regard to pubs. I was quite surprised at the amount of information CAMRA gave me—which I am sure the Minister has seen. It became quite clear from reading about what was going on that this is not isolated to Sheffield, which merely exemplifies what is happening in many communities across the country. This is a burden on communities. It is a David and Goliath fight."*

By way of comparison, Leeds have accepted 97%

of ACV applications for pubs (33/34), Lewisham, 80% (8/10), South Cambridgeshire 94% (48/51) whereas Sheffield have accepted 41% (9/22).

There are currently two ACV decisions pending with SCC:

The Carterknowle and Millhouses Community Group have resubmitted an ACV application for the **Cherry Tree**. SCC planning committee have not yet met in order to discuss a planning application, from the Co-op, to demolish the building and replace it by a shop.

Sheaf Valley Heritage Group and ourselves have submitted a joint, detailed ACV application for, grade 2\* listed, **Carbrook Hall**. Alongside a representative from Sheaf Valley Heritage Group, we recently met with Clive Betts MP (Sheffield South East Constituency). Clive expressed disquiet regarding the generally unsupportive responses from SCC regarding ACV applications.

**Dave Pickersgill**





## DERBYSHIRE MINIBUS TRIP

On the final Saturday in February, 24 Sheffield CAMRA members took part in our quarterly mini-bus visit to Derbyshire. En route to the presentation of the latest District Pub Award, we took in two pubs and a brewery. Our first stop, the **Chequers** (under the shadow of Froggatt Edge) provided Bradfield *Farmers Blonde* and Peak *Bakewell Best*. This homely, ex-Wards pub is food orientated but provided needy refreshment after our arduous journey from the Old Queens Head.

Our next stop was the **Devonshire Arms** (Pilsley), part of the Chatsworth Estate. This long-established establishment has been modernised. Apparently the bedrooms were tastefully refurbished under supervision of the Duchess!

Cask beers available were *Ay Up* from Derby's Dancing Duck and *Cousin Jack* from St. Austell.

We then moved to Bakewell and the Riverside Trading Estate for a visit to **Thornbridge Brewery**. Thornbridge have used this site since 2009 and continue to expand, taking on more units as produc-

tion increases. Their 30 bbl brewery currently supplies three brews/day for 5 days/week. 40% of production is cask with the rest key-keg and bottle. All bottling is done on site, the new £2M bottling plant having the capacity to fill 15,000 33 cl bottles/hour. In addition, Thornbridge are investing in barrel-aged beers, a growing number of warehouse units housing ex-whisky and wine casks, full of developing brews. The brewery generously supplied a free pint for everyone in our party. The cask selections were *Peverel*, a session IPA; *McConnells Vanilla Stout*; *Rattlesnake*, a strong West Coast IPA and *Lumford*, a new world pale ale.

We then progressed to Little Longstone where the **Packhorse**, originally two miners cottages, but a village pub since 1787, provided *Black Sheep Bitter* and four Thornbridge beers: *Jaipur*, *Lumford*, *Lord Marples* and *Wild Swan*.

More importantly, the pub was presented with the District Pub of the Season Award for Autumn 2016. As on our previous visit, we stood in the main bar and were treated to a glimpse



of the food as it came from the kitchen.

Several members were particularly impressed and made a mental note to return to eat at a later date.

Thanks to our Social Sec-

retary, Patrick for exacting organisation and time-keeping. We arrived back within one minute of schedule!

**Paul Crofts and  
Dave Pickersgill**

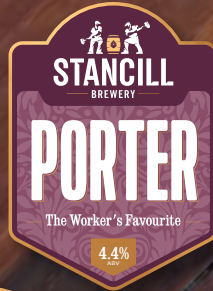




# STANCILL

## BREWERY

Stancill have a reputation for award-winning craft ales, brewed with passion and in the pursuit of perfection. We believe our new look and range of pump clips amplify these core qualities, so look out for these wherever good beers are sold.



☎ Beer Line 0114 275 2788 / 07809 427716 ☎ [www.stancillbrewery.co.uk](http://www.stancillbrewery.co.uk)

f [facebook.com/stancillbrewery](https://facebook.com/stancillbrewery) t [twitter.com/stancillbrewery](https://twitter.com/stancillbrewery)





**TEN HAND PUMPS • CRAFT BEER • GINS/ WINE  
LIVE ENTERTAINMENT • AND MUCH MORE!**

**20% CAMRA DISCOUNT ON ALL STANCILL BEERS AVAILABLE AT OUR BREWERY TAPS**

## **NORFOLK ARMS**

**8 Penistone Road • Grenoside  
Sheffield • S35 8QG**

**Tues: Quiz - 9pm**

**Weds: Pizza, Pints & Prosecco 4-9pm**

**Fri: After work club 4-7pm**

**Sat: Nibbles at the Norfolk 4-10:30pm**

**f facebook.com/norfolkarmsS35**

**📷 @norfolkarmsS35**



## **HORSE & JOCKEY**

**250 Wadsley Lane • Wadsley  
Sheffield • S6 4EF**

**Mon: Jam night - 8pm onwards**

**Tues: Quiz - 9pm**

**Thurs: Pizza, Pints & Prosecco 4-9pm**

**Fri: After work club 4-7pm**

**Street food most Saturdays**

**Mid Month Music: see facebook for details**

**f facebook.com/horsejockeyS6**

**📷 @horsejockeyS6**



## A GRAND LONDON DAY OUT

In his latest voyage of discovery our beer correspondent goes to the capital in search of some London brewed beers.

The main reason for my trip was to visit the **London Drinker Beer & Cider Festival** held in the Camden Centre which is virtually across the road from St Pancras/Kings Cross stations so is very easy to get to. I had pre booked my train ticket and it was cheaper to go via Doncaster on Grand Central Trains rather than on East Midlands Trains direct from Sheffield. Maybe East Midlands Trains should look at their advance pricing policy.

For the first time this festival featured only beers from London, but given the diversity and range of London breweries these

days, I was not spoilt for choice. I sampled cask ales from Beerblefish, Barnet, Alphabeta, Bexley, Three Sods, Wimbledon and Kew breweries, with probably the pick being Kew *Petersham Porter* at 4.3% and full of dark chocolate overtones.

Shortly before the planned 3pm afternoon festival closing time I set off on a fairly lengthy walk to the **Brewhouse & Kitchen** brewpub in the Highbury area. I have visited other brewpubs belonging to this chain and have enjoyed their beers and general ambience and today was no exception. Having sampled The *Goalscorer* and a black IPA called the *Illustrator* I retraced my steps calling first in the **Taproom** on Upper Street in Islington.

Eight casks were stillage behind the bar in a type of chilling cabinet, although only 3 were available today. I sampled a light and refreshingly Wild Weather *Serendipity* at 3.5%. Next up was another **Brewhouse & Kitchen** brewpub in Islington, near Angel station. Again, two of the in house brewed ales were sampled from the six available. These were Vlad *Harvest Ale* and *Watchmaker*.

Continuing my way back towards Kings Cross I called in the **Scottish Stores**. The welcome from both the bar staff and customers was in contrast to that I received in the two Brewhouse pubs earlier. The bar person didn't utter a word whilst she served me and the ignorant customers sat

on stools in front of the bar did not offer to move whilst they supped their lager and wine. Why do pubs insist on having bar stools in front of the bar at busy times? Fortunately the *Franklins Conquistador Stout* was the highlight of my visit to this pub.

Time still permitted a further pub visit so I continued along Euston Road to the **Euston Tap** (East Lodge), a small bar in the gatehouse next to Euston Station. Here, another Wild Weather beer was sampled, this time *Big Muddy* at 3.8%. It was then time for a brisk walk back to Kings Cross and the train back to Doncaster. No time for a drink here, before boarding the Sheffield train and then the bus home.

**Andrew Morton**



**SAME GREAT BEER -  
BRAND NEW BADGES!**  
**INTRODUCING THE NEW  
LOOK CORE RANGE**

**Abbeydale  
BREWERY**  
...and export... Sheffield...



**VOTED 'BEST BREWERY IN  
S. YORKS 2016' ON RATEBEER**

0114 281 2712  
INFO@ABBEYDALEBREWERY.CO.UK

**1ST ABBEYDALE PICTURE HOUSE BEER FESTIVAL CADS**

**ALL FREE ONTR!**

**Thursday 27th April 8pm-11pm**  
In Conjunction with Festival of Debate  
Think as you Drink - Films & Talks

**Friday 28th April 5pm-Midnight**  
Live Band **DOOSH**

**Saturday 29th April 12pm-Midnight**  
Live Bands **THE NICK BENNETT TRIO** and **THE VEGAS SIX**  
Brews, Food, Board Games, Jokebook Skills and Beer Tasting with **TOP BEDFORD**

**Sunday 30th April 11am-6pm**  
Vintage Market with **Sheffield Antiques Quarter**

Facebook: The Abbeydale Picture House 2017 Twitter: @ABBEYDALE\_PH

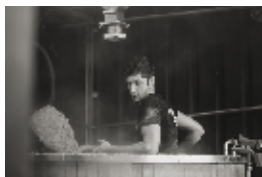


Abbeydale Picture House, 387 Abbeydale Road S7 1FS



# BREWERY TOURS

*Join us for a guided tour this summer*



April 26 | May 31 | June 28 | July 26 | August 30 | September 27

Brewery Yard  
Welbeck, Worksop, S80 3LT  
01909 512539  
info@welbeckabbeybrewery.co.uk



@WELBECKABBEYBRY

Join one of our expert brewers for a guided tour around our traditional microbrewery. Tickets are £10 each and with this you will enjoy two pints of our loving hand crafted real ale, plus learn a little more about the ingredients and passion which go into each pint. Tickets can be purchased at Welbeck Farm Shop, Portland House in Sheffield, or from the brewery directly.



## PUB OF THE MONTH APRIL 2017 OLD QUEEN'S HEAD

The Old Queen's Head, next to Sheffield Interchange, is believed to be the oldest domestic building in Sheffield, and is thought to have begun life as a shooting lodge for Sheffield Manor, later becoming he wash house.

It is known to have become a beer house by the 1840's and passed through the hands of several breweries before being acquired by Thwaites around 20 years ago. The front lounge, occupying the half-timbered older part of the building has an original fireplace and carved bay window overlooking the outside seating area. To the rear are two further seating areas around the central bar, and there is an upstairs function room.

Mike and Suzana took on the pub 4½ years

ago, and serve a range of Thwaites beers, usually including Nutty Black, Wainwright and Lancaster Bomber, together with two rotating seasonal beers.

The pub opens from 10am to 11pm every day and food is available 12 to 9pm (4pm Sundays). There are regular food nights – Monday is Czech specialities reflecting Mike and Suzana's home town Prague, Tuesday is pie night, Fish on Wednesday and burgers Thursday, each with special offers. A traditional roast is available Sundays.

The award will be presented on Tuesday 11 April, and to mark the occasion all cask beers will be reduced to £2.50 from 7pm

**Wils Gee**

## PUB OF THE MONTH

Our Pub of the Month award is a bit of positive campaigning, highlighting local pubs that consistently serve well kept real ale in friendly and comfortable surroundings.

Voting is your opportunity to support good, real ale pubs you feel deserve some recognition and publicity.

All CAMRA branch members are welcome to vote at branch meetings or on our website.

It's not one pub against another, simply vote YES or NO as to whether you think the pub should be PotM. If we get enough

votes in time we will make the award.

Nomination forms are available at branch meetings and on the website. The pub must have been open and serving real ale for a year and under the same management for 6 months.

Winners compete alongside our *Good Beer Guide* entries for branch Pub of the Year, the winner of which is entered into the national competition.

The list of nominees includes which buses to take if you fancy a trip to try them out:

## VOTE NOW

### Broadfield

Abbeydale Road (buses 10, 10a, 75, 76, 86, 96, 97, 98, 218)

### Doctors Orders

Glossop Road (buses 6, 120, 271)

### Nottingham House

Broomhill (buses 51, 52, 52a, 273, 274, 275)

### Stags Head

Sharrow (bus 4, 4a)

### University Arms

(buses 7a, 51, 52, 52a, 273, 274, 275, Blue/Yellow tram)

### Wisewood Inn

Loxley (buses 31, 31a, 763, 764, 767)

at [sheffieldcamra.org.uk/potm](http://sheffieldcamra.org.uk/potm)

THE BANNER CROSS

# FUNCTION ROOM



AVAILABLE FOR  
PRIVATE HIRE

TEL. 0114 2661479

## FESTIVAL GUIDE

### APRIL

#### **Burton CAMRA**

**Thu 30 Mar – Sat 1 Apr**

Held at the gothic town hall, this festival has a special atmosphere! On the bars are over 130 real ales and 30 traditional ciders & perries along with stalls, live music and a cafe selling hot food. As ever on Friday and Saturday lunchtime there will be a performance of Martin Atterbury playing the mighty Wurlitzer Organ. Open 6pm-11pm Thursday, 11am to 11pm Friday and 11am to 10pm Saturday.

#### **Chesterfield Mayor's Appeal**

**Fri 7 – Sat 8 Apr**

This is a new festival held in Chesterfield Market's Assembly Room to raise money for charity. Entry tickets are £5 either in advance or on the door. The format is the same as Chesterfield CAMRA's Market Festival held in October with a range of 35 beers and 6 ciders on the bar and a food stall selling cheese sandwiches, pork pies and ploughmans platters provided by 'Cheese Factor' whose shop is in the market downstairs. The festival is open for three sessions – Friday 5:30pm to 11pm and Saturday 11am to 4pm then 6pm to 11pm.

The venue is a few minutes walk from the main town centre bus stops (routes 43/44/50/50a/X17 go from Sheffield) and is about a 10 minute walk from Chesterfield rail station.

#### **Peddler Market**

**Fri 7 – Sat 8 Apr**

The usual monthly event open Friday evening and Saturday afternoon/evening featuring a variety of street food traders, craft stalls, art, music and a number of bars with a range of real ales and craft beers available. The featured breweries change each

month. The Peddlers Venue is at 92 Burton Road, Neepsend, on bus routes 7/8 or a short walk from Shalesmoor tram stop. Sheffield Brewery which is just across the road also open on the same evenings for their Beer Club tap session. Both events offer free entry. [peddlermarket.co.uk](http://peddlermarket.co.uk)

#### **Hope Valley (Old Hall Hotel)**

**Fri 14 – Mon 17 Apr**

The Old Hall's programme of bank holiday Hope Valley Beer Festivals is back for 2017, usual format with a tent on the car park with a range of real ales and ciders, souvenir glasses, music and food. There is an element of fundraising for the British Red Cross Refugee Support with the bands donating their fees. The pub is about 10 minutes walk from Hope Station or the Sheffield-Castleton buses (271/272/273/274) pass right outside.

#### **Doncaster Brewery**

**Thu 13 – Mon 17 Apr**

The brewery tap puts on one of their regular beer festivals over the Easter weekend.

#### **Chesterfield Alehouse**

**Thu 13 – Mon 17 Apr**

This micropub hosts one of its popular tap takeover style beer festivals, this time showcasing a range of beers from Little Critters of Sheffield and Pentrich of Ripley.

#### **Arkwright Arms**

**Fri 14 – Mon 17 Apr**

The Arkwright's Easter beer and cider festival featuring a selection of at least 30 real ales, 10 ciders and 3 perries. The beer list will be a mixture of first timers and old favourites, the cider list will be the usual Arkwright range with a few newbies thrown in for good measure! The pub will also be serving food over the weekend. The pub is at Sutton-Cum-Duckmanton and served by regular buses from Chesterfield.

#### **Skipton CAMRA**

**Thu 20 – Sat 22 Apr**

around 70 real ales plus foreign bottled beers, cider and food. Venue is Ermysted's Grammar School, a 12 minute walk from the station (regular trains from Leeds). Open Thursday 3pm to 10pm, Friday & Saturday 11am to 10pm. Admission £2 or £3 depending on session, free for CAMRA members.

[skiptonbeerfestival.camra.org.uk](http://skiptonbeerfestival.camra.org.uk)

#### **Grafton Hotel (Workshop)**

**Thu 20 – Sun 23 Apr**

The Grafton's St George's beer festival offering a range of real ales on handpump, live music and food. Free entry and dogs welcome. The pub is about 5 minutes walk from Workshop station.

#### **Bolton CAMRA**

**Thu 27 – Sat 29 Apr**

around 50 real ales plus cider, mead and food in the Bolton Ukrainian Club. Opens Thursday 3:30pm to 10:30pm, Friday & Saturday midday to 10:30pm. Entry £3 (£2 for CAMRA members) Friday night, £2 (free for CAMRA members) other times. The venue is on Castle Street, a 12 minute walk from Bolton rail station. Regular trains run from Manchester Piccadilly.

[boltonbeerfestival.org.uk](http://boltonbeerfestival.org.uk)

#### **CADS @ Abbeydale Picture House**

**Thu 27 – Sun 30 Apr**

More than just a beer festival and in an iconic old building with free admission! Things kick off Thursday with 'Think as you Drink' – films and talks brought to you by the festival of debate, Friday there is live music With Do\$ch, Saturday more live music plus food, board games, art sale and a bottled beer tasting then finally Sunday afternoon there is a Vintage Market brought to you by the Antiques Quarter traders.



THE  
SHEFFIELD  
BREWERY CO.  
LTD

ANNOUNCING OUR RANGE OF MOST EXCELLENT

# FINELY POLISHED BEERS

AWARD WINNING CORE RANGE \* MONTHLY SPECIALS  
BOTTLED BEER \* BREWERY TAP ROOM \* BREWERY TOURS  
PURCHASE BEER DIRECT FROM THE BREWERY \* BEER CLUB



FINELY POLISHED BEERS SINCE 2006



FIND US AT:  
THE SHEFFIELD BREWERY CO.  
UNIT 11, JO ALBYN COMPLEX  
BURTON ROAD, SHEFFIELD  
S3 8BT



THE HALLMARK OF A PERFECT PINT

TEL: 0114 272 7256  
SHEFFIELDBREWERY.COM

FOLLOW US ONLINE  
@SHEFFIELDBREWERY

## University of Sheffield Student Union

**Fri 28 – Sun 30 Apr**

Over 100 real ales on the festival stillage in the Raynor Lounge plus beers in the Interval Cafe Bar and Bar One as normal along with a cider tent and music tent in the Union Gardens – plus craft keg beers, pop up artisan gin bar and food. Friday is open 2pm to midnight and is pie day, Saturday is open from 2pm and is BBQ day, Sunday is Cider & Pig day from midday with a replenished cider tent remaining open to wash down that hog roast! Entry is free, you need to buy beer/cider tokens on arrival. Access via Bar One on Glossop Road or via Interval on Western Bank, both near University tram stop.

## Hill Top Sports & Social Club (Dronfield)

**Fri 28 – Sun 30 Apr**

The club's annual bank holiday beer festival where non-members are welcomed in to try an extended range of beer and cider and enjoy the club's entertainment. Details TBC.

## Elsecar Heritage Railway (Barnsley CAMRA)

**Fri 28 Apr – Mon 1 May**

Barnsley CAMRA are back for their 6th year with a beer and cider tent, music stage and food stalls in the railway yard over the bank holiday weekend. Entry to the festival is free (you just need to pay a deposit on a glass on arrival) and it is open from 11am to 10pm Friday to Sunday and 11am to 7pm Monday. The railway will be operating train rides during the daytime, buy a ticket from the shop on the station platform in the normal way. The heritage railway is about a 10 minute walk from Northern Rail's Elsecar station, on the Sheffield-Barnsley-Leeds line. [barnsleycamra.org.uk](http://barnsleycamra.org.uk)

## MAY

### 9 Pin

**Fri 5 May**

On the Edge Nano Brewery's regular showcase night featuring 9 beers – a pin of each (hence 9 Pin) on the bar in the Old Junior School on South View Rd, Sharrow (a few minutes walk from London Rd). There is also a cafe serving pie & peas, music and games. Free entry. Open from 6pm.

### Doncaster CAMRA

**Thu 11 – Sat 13 May**

A new venue this year with the festival taking place at Unity House on Carr Lane in Hyde Park featuring a range of 50 real ales along with cider and bottled beers.

Buses 55, 56 and 58 from Doncaster Interchange to Hyde Park and regular trains from Sheffield to Doncaster.

### Barrow Hill Rail Ale

**Thu 18 – Sat 20 May**

This ever popular annual festival is back at the railway roundhouse for 2017 featuring a wide range of beers (cask, keg and bottle), cider, food, train rides (Fri/Sat daytime) and live music. A volunteer operated shuttle bus service is provided from Chesterfield railway station out to the venue. The festival is open each day from midday to 11pm. Advance tickets available from [seetickets.com](http://seetickets.com) or pay on the gate (subject to availability). Alternatively there is a special charter train running to the festival on Friday and Saturday offering a travel and entry package – the train will run into Barrow Hill platform!

[railalefestival.com](http://railalefestival.com)

### Lincoln CAMRA

**Thu 25 – Sat 27 May**

100+ real ales plus cider, perry, bottled beers, food and music in Lincoln Drill Hall.

[lincolncamra.org.uk](http://lincolncamra.org.uk)

## Lees Hall Golf Club

**Fri 26 – Sun 28 May**

Their annual beer festival

## Sheffield Food & Drink Festival

**Sat 27 – Mon 29 May**

Pop up kitchens, street food traders, food market and a beer tent in Sheffield City Centre plus events in venues around the City.

## JUNE

### Stockport CAMRA

**Thu 1 – Sat 3 Jun**

150+ real ales plus cider, world beers, food, entertainment and more at Edgeley Park football ground

[stockportfestival.org.uk](http://stockportfestival.org.uk)

### Castle Rock Yard Party

**Wed 31 May – Sat 3 Jun**

Castle Rock Brewery in Nottingham celebrate their 40th birthday this year and are putting on a beer festival and yard party showcasing their own and guest beers including some new beers brewed for the occasion along with food and music. The event also incorporates their annual beer of the year awards which are voted for by the customers in the pubs owned by Castle Rock. Tickets and information from [www.castlerockbrewery.co.uk](http://www.castlerockbrewery.co.uk). The brewery is a short walk from Nottingham rail station, regular direct trains from Sheffield operated by Northern and East Midlands Trains.

### Belper Goes Green

**Fri 2 – Sun 4 Jun**

Amber Valley CAMRA provide a real ale and cider festival at the Rugby Club as part of a wider green festival featuring food, entertainment, stalls and activities.

[transitionbelper.org](http://transitionbelper.org)

## 3 Valleys

**Sat 3 Jun**

This popular annual event spread across a dozen pubs and clubs in the Dronfield area with a free bus service from Dronfield station is back again. All venues offer free entry and are a mixture of pubs and clubs in town, suburban and rural locations. Hop on and off the buses at the different venues to try the different beers, ciders, food, music and atmospheres on offer. Some of the venues will have outside bars, food stalls and more in addition to their normal bar. The buses run from midday to 9pm.

Venues this year are Barrack, Apperknowle; Blue Stoops, Dronfield High Street; Coach & Horses, Dronfield; Dronfield Arms, Dronfield; Green Dragon, Dronfield; Hill Top Sports & Social Club, Hill Top; Hyde Park Inn, Hill Top; Manor House Hotel, Dronfield High Street; Miners Arms, Dronfield Woodhouse; Miners Arms, Hundall; Jolly Farmer, Dronfield Woodhouse; Pioneer Club, Dronfield and Three Tuns, Dronfield Hallowses

**3valleys.org.uk**

## JULY

## Sunfest

**Wed 5 – Sun 9 Jul (TBC)**

This annual beer festival at the Rising Sun pub at Nether Green in Sheffield sees the car park closed to make way for a tent filled with around 100 guest beers on cask plus a selection of craft beers on keg along with cider and food. There is also music and stalls. Meanwhile inside the pub all the handpumps on the bar are given over to Abbeydale Brewery, who own the pub, showcasing their range including a charity beer brewed for the festival. Buses 86a and 120 stop right outside the pub.

**risingsunsheffield.co.uk**

## 1st National Woodfest

**Thu 6 – Sat 8 Jul**

This is being held at the Junction pub in Castleford (between Wakefield and Leeds if you catch the Sheffield to Leeds via Barnsley stopping train) and organised by members of the Society for the Preservation of Beers from the Wood showcasing a selection of beers served from wooden casks. Capacity is limited so it is advisable to book tickets in advance online at **woodfest2017.com**.

## Bassetlaw Beer Festival @ The Grafton Hotel, Worksop

**Fri 7 – Sun 9 Jul**

The 3rd annual summer beer festival at the Grafton Hotel, 5 minutes walk from Worksop station, featuring 24 real ales, 10 ciders and live music. Free entry.

## AUGUST

## CAMRA's Great British Beer Festival

**Tue 8 – Sat 12 Aug**

CAMRA's annual major beer festival held at Olympia Exhibition Halls in London (next to Kensington Olympia rail station, served by London Overground and Southern) and staffed by volunteers from across the UK, Europe and America, this year celebrating its 40th anniversary. Features several hundred real ales including a number imported from the USA along with European beers both on draft and in bottles. There are also dedicated cider & perry bars offering a huge choice. Food and product stalls, games and a programme of entertainment also features. More information at **www.gbbf.org.uk**, advance tickets are available that offer cheaper and quicker entry. Regular trains and coaches run between Sheffield and London operated by East Midlands Trains, National Express and Megabus.com.

## Peakender

**Fri 18 – Sun 20 Aug**

Arranged by Thornbridge Brewery at Bakewell Showground, this festival features a range of beers from Thornbridge plus guests including Hawkshead, Magic Rock, Tiny Rebel, Wild Beer Co and others along with live music. Entry to the beer festival is free. A campsite is available (must be booked in advance). TM Travel Bus 218 runs regularly from Sheffield to Bakewell – every half hour in the daytime, less frequent in the evening.

## SEPTEMBER

## Cleethorpes Rail Ale & Blues Festival

**Fri 15 – Sun 17 Sep**

Held at the Cleethorpes Coast Light Railway, this event features over 50 real ales, a programme of live blues music performances and narrow gauge steam train rides. Admission to the beer festival is free. More information **www.cclr.co.uk**. Regular direct trains run from Sheffield to Cleethorpes, operated by Transpennine Express (daily) and Northern (Saturdays).

## Sheffield CAMRA's Steel City Beer & Cider Festival

**Wed 18 – Sat 21 Oct**

Our 43rd annual festival, back again at Kelham Island Industrial Museum with over 200 real ales plus bottled beers from around the world and a range of traditional Cider & Perry. The festival also features a variety of street food vendors, products stalls and entertainment.

We're currently looking for volunteer staff plus sponsors.

**steelcitybeerfestival.co.uk**



## BRANCH DIARY

### SHEFFIELD

#### INFO AND BOOKINGS:

[social@sheffieldcamra.org.uk](mailto:social@sheffieldcamra.org.uk)

#### Branch meeting & AGM

**8pm Tue 4 Apr**

The usual monthly formal members get together to discuss branch business; share pub, club and brewery news and catch up on what is happening in the campaign – combined with the formal annual general meeting where we debate any motions submitted, elect a new committee for the year ahead, inspect the branch accounts and announce the branch pub of the year winner. All Sheffield & District members are invited to attend. The venue is Shakespeare's on Gibraltar Street (buses 31,57,81,82,85,86).

If you would like to put yourself forward to join the committee in advance of the meeting, please email [secretary@sheffieldcamra.org.uk](mailto:secretary@sheffieldcamra.org.uk).

#### Pub of the Month

**8pm Tue 11 Apr**

Our April winner, voted for by our members, is the Old Queens Head in Sheffield Centre. Join us for the festivities as we present their certificate and enjoy a few beers.

#### Festival planning meeting

**8pm Wed 19 Apr**

We continue work planning our 43rd annual Steel City Beer & Cider Festival, due to take place at Kelham Island Industrial Museum in October. If you are interested in being part of the organising committee or helping out in any other way please come along to this meeting at Shakespeares on Gibraltar Street.

#### Beer Matters distribution

**8pm Tue 25 Apr**

If you have signed up for a magazine delivery run, come along and collect your supply of the May issue and enjoy a beer with other distributors.

If the pubs you frequent are in our area but don't receive copies, why not sign up as a distribution volunteer?

Please note the distribution arrangements are changing, if you deliver Beer Matters please contact our new co-ordinator Andy Shaw to let him know where you deliver to and get details of the new distribution venue.

#### Committee meeting

**8pm Tue 25 Apr**

The monthly business meeting for the branch committee at the Rutland Arms.

**TRY A TASTE  
of  
TRADITION**

**Farmers Ales from Bradfield Brewery**

On-Site Brewery Shop open Monday - Saturday 10am until 4pm.  
[info@bradfieldbrewery.com](mailto:info@bradfieldbrewery.com) • 0114 2851118 • [www.bradfieldbrewery.com](http://www.bradfieldbrewery.com)  
Bradfield Brewery Limited, Watt House Farm, High Bradfield, Sheffield, S6 6LG

Visit our page on Facebook or follow us on Twitter for the latest news and offers.



Real Ale, Real Food & Real Fires

## The Old Hall Hotel

A Traditional 16th Century Coaching Inn  
Market Place, Hope, Hope Valley, Derbyshire S33 6RH



f /TheOldHallHotel

@oldhallhope

Homemade Food Served All Day | 6 Cask Marque Ales  
Outstanding B&B | Roaring Open Fires  
Muddy Boots & Dogs Welcome | Friendly Atmosphere



[www.oldhallhotelhope.com](http://www.oldhallhotelhope.com)

01433 620160

[info@oldhallhotelhope.com](mailto:info@oldhallhotelhope.com)

A Pub Done Different

## THE PEAK HOTEL

The Peak Districts' Eccentric Alehouse  
How Lane, Castleton, Hope Valley, Derbyshire S33 8WJ



f /ThePeakHotelCastleton

Find us on TripAdvisor

@peakcastleton

Homemade Food Served All Day | Outstanding B&B  
5 Cask Marque Ales & Large Selection of Craft Bottles  
Muddy Boots & Dogs Welcome | Roaring Open Fires



[WWW.THEPEAKHOTEL.CO.UK](http://WWW.THEPEAKHOTEL.CO.UK)

01433 620247

[INFO@THEPEAKHOTEL.CO.UK](mailto:INFO@THEPEAKHOTEL.CO.UK)

## BRANCH DIARY (CONTINUED)

### **RambAle – Malin Bridge, Bradfield and Loxley**

**10am Sat 29 Apr**

We catch the 10:55am tram from Castle Square (optional meet in the Bankers Draft for breakfast beforehand) to Malin Bridge.

We will follow the Loxley riverside path upto the Nags Head and then up to the Old Horns Inn at High Bradfield. A sharp descent takes us down to The Plough at Low Bradfield for further refreshment before walking around Dam Flask back to the Nags Head for a drink before bus back to Sheffield Centre.

A Citywide day pass at £4.60 covers the above travel. Please wear appropriate outdoor clothing.

### **Branch meeting**

**8pm Tue 2 May**

The usual monthly formal members get together to discuss branch business; share pub, club and brewery news and catch up on what is happening in the campaign. The venue this month is the Princess Royal on Slinn Street in Crookes, a few minutes walk from bus route 52.

### **Festival planning meeting**

**8pm Tue 16 May**

We continue work planning our 43rd annual Steel City Beer & Cider Festival, due to take place at Kelham Island Industrial Museum in October. If you are interested in being part of the organising committee or helping out in any other way please come along to this meeting at Shakespeares on Gibraltar Street.

### **Beer Matters distribution**

**8pm Tue 23 May**

If you have signed up for a magazine delivery run, come along and collect your supply of the June issue and enjoy a beer with other distributors.

If the pubs you frequent are in our area but don't receive copies, why not sign up as a distribution volunteer?

Please note the distribution arrangements are changing, if you deliver Beer Matters please contact our new co-ordinator Andy Shaw to let him know where you deliver to and get details of the new distribution venue.

### **RambAle**

**11:20am Mon 29 May**

This month we are walking in the Hope Valley, taking in the beer festival at the Old Hall Hotel in Hope along with a few other good country pubs.

We catch the 273 bus from Sheffield Interchange at 11:20 out to Moscar for a moorland walk to the Anglers Rest at Bamford (or come out on a train & join us there). After a drink we shall walk over via Thornhill to the Cheshire Cheese at Hope, before joining colleagues at the Hope Valley Beer Festival at the Old Hall Hotel. Back via either train or 272 bus from Hope.

## DRONFIELD

### **INFO AND BOOKINGS:**

**Nick Wheat**

[socials@dronfieldcamra.org.uk](mailto:socials@dronfieldcamra.org.uk)

### **Branch meeting**

**8pm Tue 11 Apr**

Venue: Smiffy's.

### **Mansfield joint social**

**Sat 6 May**

Joint social with Mansfield and Doncaster branches round Dronfield area. Details TBC.

### **Branch meeting**

**8pm Tue 9 May**

Venue: Gate @ Troway.

## COMMITTEE



The new committee will be elected at the AGM at the start of April.

In the meantime, please send any enquiries to:

[secretary@sheffieldcamra.org.uk](mailto:secretary@sheffieldcamra.org.uk)

### **CAMRA (National)**

230 Hatfield Rd, St Albans, Herts, AL1 4LW  
[www.camra.org.uk](http://www.camra.org.uk)  
01727 867201

A photograph of four men sitting around a wooden table in a pub, each holding a glass of beer and smiling. The background features a black sign with white text and two framed pictures on the wall.

For real  
friendships  
join the  
campaign!

Receive exclusive benefits and meet  
like-minded people. For more information  
on membership and to join visit

[www.camra.org.uk/join](http://www.camra.org.uk/join)



CAMPAIGN  
FOR  
REAL ALE

Thornbridge  
  
presents...

# PEAKENDER

2017

FREE  
ENTRY TO THE  
FESTIVAL OF  
BEER\*

Bakewell Showground, 18th to 20th August

Enjoy some of the world's best beers in some of the UK's most stunning countryside

FAMILY ACTIVITIES / BEER TALKS AND TASTINGS / LOCAL FOOD / LIVE MUSIC

\*CAMPING MUST BE PRE-BOOKED, SEE WEBSITE FOR DETAILS

[thornbridge.co.uk](http://thornbridge.co.uk)

T: 01629 815 999 E: [peakender@thornbridge.co.uk](mailto:peakender@thornbridge.co.uk)

